

Congratulations  
on the purchase of your  
top quality pool cover!

Care and Maintenance Instructions



Proudly  
Australian Owned  
& Manufactured

elite  
POOL COVERS

# Installation:



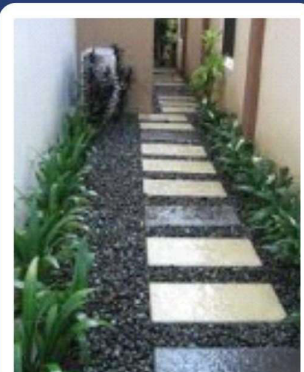
When preparing for the installation of your new pool cover, please ensure that the water level in your pool is maintained at approximately halfway up the skimmer opening. This level is essential to achieve proper installation and performance.

Prior to our team's arrival, the old cover should be removed and cleared from the pool area to provide unobstructed access for the new cover and roller system.

It is important to note that we do not remove or dispose of the old cover.



Is the pool water level halfway up the skimmer opening?



Is there clear access to carry in cover & roller?



Has the old cover been removed and disposed of?

# Pool Cover Appearance



Bubble covers for pools are typically made from a durable polyethylene fabric that comes on a roll. During the manufacturing process, this material retains a certain "memory" of its rolled state. When the cover is unrolled and placed on the pool's surface, the fabric may initially exhibit the characteristics of this memory, causing it not to lay perfectly flat.

As the cover is exposed to sunlight, it begins to warm up. This warming process plays a crucial role in improving the cover's ability to lay flat. The heat from the sun gradually softens the polyethylene fabric, allowing it to become more pliable. As a result, the material starts to lose its memory of the rolled state, & the trapped air within the bubbles begins to equalize and distribute more evenly across the cover.

Over time, the cover adjusts to the contours of the pool and lays flatter as the polyethylene fabric relaxes and conforms to its new environment. This process is entirely natural and part of the cover's adaptation to its intended purpose.

It is important to note that proper initial placement of the cover, with care taken to evenly distribute it across the pool's surface, can facilitate this process. Additionally, using cover accessories or weights along the edges can help ensure the cover stays in place and encourages it to lie flat more quickly.

In conclusion, the polyethylene fabric used to make bubble covers retains a memory of its rolled state, which initially affects its ability to lay flat on the pool. However, exposure to sunlight and warmth allows the fabric to become more pliable, helping the cover to gradually relax and conform to the pool's shape, resulting in improved flatness over time.



---

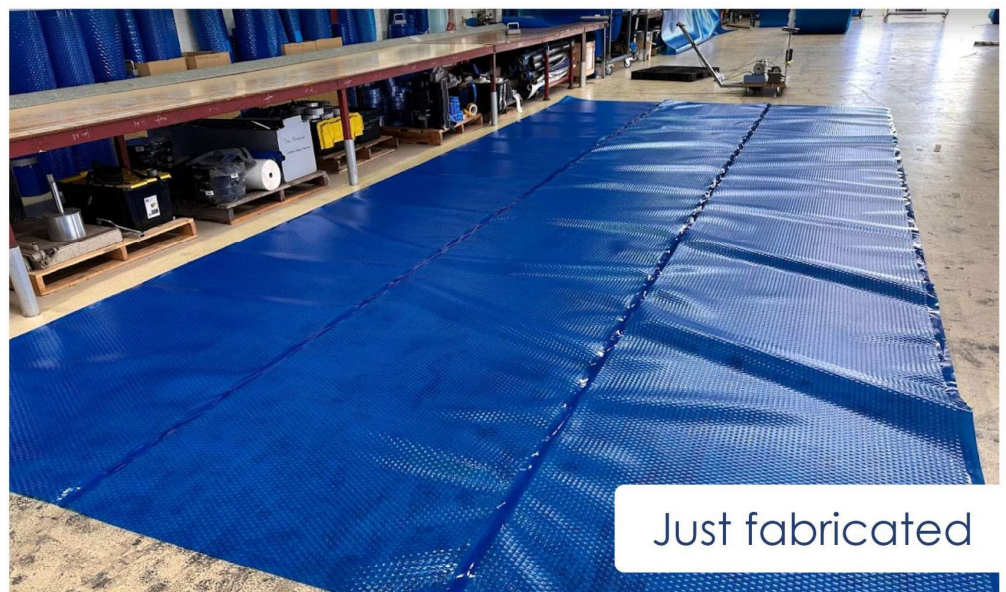
When a cover is fabricated, it is not uncommon for a cover to have wrinkles and not sit flat on the pool. This is due to several factors:

- 1) fabric memory (it was rolled up)
- 2) Air pockets (trapped air pushes the cover up)
- 3) Fabric temperature
- 4) Joint welding (high temperature in concentrated area)

While the initial fit of your new cover may not be perfectly flat due to the manufacturing process, it will naturally improve with time as it adapts to the pool's shape and with exposure to sunlight.

Rest assured that the cover will gradually lay flat as it settles into its intended position, ensuring optimal functionality and appearance.

---



Just fabricated



A few weeks  
after installation

# Getting the most out of your new cover



Bubble blanket  
Over Cover

Maintain  
Chlorine & pH Levels



To prolong the life and effectiveness of your solar pool cover, it's crucial to maintain proper water balance and consistently use the white over cover.

Proper water balance not only ensures a safe and enjoyable swimming environment but also protects your pool cover. Imbalanced water chemistry particularly high chlorine levels will lead to deterioration of the cover material over time.

Recommended basic water parameters (as per Australian Standards):

To protect not only your pool blanket, but the lining of your pool and other pool equipment.

Free  
Chlorine

1.5-2.5ppm

pH

7.2 - 7.6

Total  
Alkalinity

80-120ppm

**\*It is recommended to run the pool pump during the hottest part of the day if the blanket is on the pool. This rotates the water to avoid the splitting of the cells.**

Additionally, the over-cover serves as a shield against excessive UV exposure preventing roller burn to the cover, debris, and physical wear and tear, helping to extend the cover's lifespan.

By combining vigilant water maintenance with the use of the over cover, you'll not only enhance the durability of your solar pool cover but also maximize its energy-saving and heat retention benefits, providing a more cost-effective and enjoyable swimming experience.



# Caring for your new Elite Pool Cover:

Without proper care ANY pool cover can be ruined in a fraction of its expected life span.

Most warranty claims are not caused by product failure, but by owner misuse such as: leaving a cover rolled up out in the direct sunlight while off the pool; and having excess chlorine in the pool - either a little too high over a prolonged period or a lot too high over a very short period, high or low pH levels. Owner misuse such as these may VOID YOUR WARRANTY.

To get the maximum lifespan out of your Elite Pool Cover:

1. Maintain correct chlorine & pH levels and test your water regularly.

- Keep chlorine levels less than 2.5ppm. Your cover will deteriorate quicker when you have excessive chlorine as it is a corrosive agent and creates wear on the cover.
- Keep pH levels between 7.2 and 7.6 to ensure your water is not corrosive.
- Please do not assume that your salt-water chlorinator can control chlorine levels in your water.

2. When shocking your pool, ensure that you take the cover off.

- It is important to leave the cover off for 48 hours to allow your chlorine level to return to recommended parameters.

3. Do not leave the cover folded or rolled up in the sun.

- Store the pool cover in a completely covered environment, in full shade and not under shade cloth. The sun and heat will cause corrosive wear and will cause the cover to be damaged in strips across the cover resulting in delamination, and in extreme cases overheating on the roller can cause the material to become molten and weld onto itself.

4. Hose thoroughly before storing your cover for long periods of time.

- Wash the pool cover on both sides with fresh water to remove any pool chemicals to eliminate the possibility of chlorine residue from burning the cover.
- This is not necessary if you are replacing the cover within 24 hours.

5. Always use your Elite over-cover whenever your cover is on the roller.

- Every roller is supplied with a complimentary white Elite over-cover.
- Whenever your cover is rolled up on the roller, please ensure the over-cover is in place over your pool cover.
- Protect the pool cover with only our recommended over-covers. You can store your cover on the roller with your white Elite over-cover in place in direct sunlight; serviceable Elite over-covers block the sun. Other products like tarps etc are not recommended.

6. Remove your solar pool cover in the winter months.

- If you leave the cover on for extended periods of time, chemical gases can build up causing damage to the blanket along with the surface of your pool and pool equipment.

7. Never roll your blanket onto a hot roller that has been sitting in the sun. This will cause melting of your blanket. Simply cool roller down with cold water beforehand.

## WARRANTY

ALL CLAIMS & ENQUIRIES MUST BE MADE DIRECTLY TO:

### ELITE POOL COVERS

**BLANKETS:** The Manufacturer warrants for the period of 5, 8, 10 or 12 years (to the original customer) from date of purchase of original Pool Blanket and 6 months for a Spa Blanket. The Pool Blanket must be returned to the Manufacturer within warranty period by original customer (at his sole expense). Manufacturer will, in the event that after Manufacturer's examination should disclose the Pool Blanket to be defective in workmanship or material, at its option either repair or alternatively replace the Pool Blanket. In the case of replacement, no charge will be made within the first 12 months of ownership. (12-year blanket starts after the 24th month) For replacement between the beginning of the 13th month and the end of the 24th month from date of purchase the customer shall pay 50% of the then current list price of the new Pool Blanket. For replacement between the beginning of the 25th month and the end of the 48th month from date of purchase, the customer shall pay 75% of the then current list price of the new Pool Blanket. For replacement between the beginning of the 61st month and the end of the 144th month from date of purchase the customer shall pay 90% of the then current list price of a new Pool Blanket. Since the Spa Blanket warranty is only 6 months, the customer will be entitled to 1/6th off for each full remaining month of warranty.

### BLANKETS:

**TICK APPLICABLE BOX: (Elite Pool Covers offers:) Date**

- ☐ 5 Year Blanket: 1st year 100%, 2nd year 50%, 3rd year 25%, 4th year 25%, 5th year 10%
- ☐ 8 Year Blanket: 1st year 100%, 2nd year 50%, 3rd year 25%, 4th year 25%, 5th year 15%, 6th, 7th, 8th year 10%
- ☐ 10 Year Blanket: 1st year 100%, 2nd year 100%, 3rd year 50%, 4th year 25%, 5th year 20%, 6th, 7th, 8th, 9th and 10th year 10%
- ☐ 12 year Triple Cell Blanket: 1st year 100%, 2nd year 100%, 3rd year 100%, 4th year 50%, 5th year 25%, 6th, 7th, 8th 20%, 9th, 10th, 11th & 12th year 10%

### ROLLERS:

- ☐ 6 year prorated: manufacturer defects warrants 1/72nd per month
- ☐ 8 year prorated: manufacturer defects warrants 1/96th per month
- ☐ 10 year prorated: manufacturer defects warrants 1/120th per month
- ☐ 12 year prorated: manufacturer defects warrants 1/144th per month

Ordinary wear and tear is not a defect in workmanship or material and the manufacture is not liable for same.

Subject to any statutory rights the original customer may have. Manufacturer will not be liable for any incidental or consequential losses or damage resulting from any defect in workmanship or material. The purchaser shall install, maintain and use in accordance with Manufacturer's instructions.

- Solar Blankets
- Rollers Systems
- Debris Covers
- Security Covers
- Automatic Systems
- Commercial Systems

CALL OR VISIT NOW FOR A LONGER SUMMER

**(08) 9240 2262**

Toll Free: 1300 136 696

Fax: (08) 9240 2261

FACTORY SHOWROOM  
10 Cressall Road, Balcatta

sales@poolcovers.com.au  
www.poolcovers.com.au



## ELITE Solar Blanket / Roller Care, Operation and Warranty Instructions



Congratulations on your purchase of an Australian made Elite Pool Cover product. Elite prides itself on supplying the largest product range, best quality and service available in Australia to both the domestic and commercial markets.

You can rest easy knowing you have invested wisely in the best product available.

With proper care you will get many years of enjoyment and service from an Elite product. To ensure you understand how to protect your investment please read the following warrant and care instructions:

ALL CLAIMS AND ENQUIRIES MUST BE MADE DIRECTLY TO: ELITE POOL COVERS.

## HOW TO OPERATE YOUR ELITE POOL BLANKET AND ROLLER

### Winding your pool blanket off your pool

- Position the Roller centrally at one end of your pool. If your Roller has pin brakes locate them in the holes provided (Fig 1).
- If your pool has swim outs, or of a shape that needs to have a flap folded over before winding, fold them over first, (Fig 2 & Fig 3).
- Detachable System** – You will notice on the Blanket at the Roller end there are black clamps with "TEE" pieces through them. Lift the centre up and place it through the corresponding hole in the roller tube. Continue until all the "TEE" pieces are connected to the Roller tube.  
Note: If your pool has a free form shaped end you might have to start to connect at the longest part of your Blanket (Fig 4).
- Fixed Cord Type System** – Start to wind the handle, making sure the Blanket rolls on straight. Gently wind the blanket up onto the Roller, if your Blanket wanders off centre, align it as you go by pushing and pulling your Blanket from one side to the other.
- Once your Blanket is wound up, place on the protective white over cover. The stretchy straps lock into the cut outs on the frame (Deluxe or Platinum rollers only Fig 5). On the standard frames the stretchy straps go under the frame.  
**Tip:** When the Blanket end has just come out of the water onto the Roller, use your leaf scoop to scoop up the debris.  
**Tip:** If your skimmer box is at the roller end, you can also run your pump to skim off the fine dust and dirt.

## ENJOY YOUR ELITE POOL BLANKET AND ROLLER

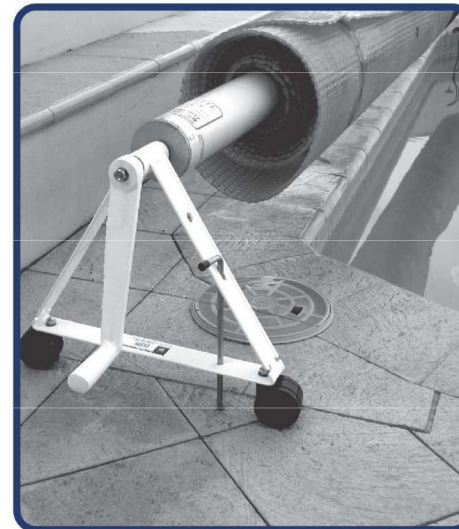


FIG 2.

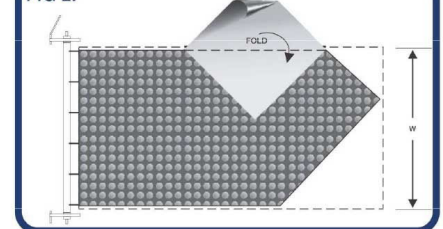
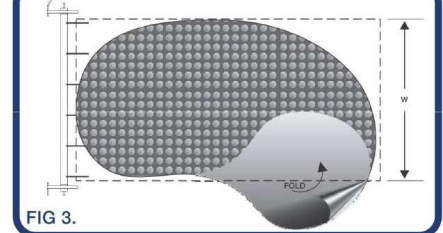


FIG 3.





## HOW TO OPERATE YOUR ELITE POOL BLANKET AND ROLLER

### Putting your pool blanket onto your pool

1. Remove your white reflective over cover.
2. Hold the end of the pull cord if supplied, and walk to the opposite end of the pool to the roller.
3. Gently pull the cord and the Blanket will glide onto the Pool.  
**Note:** As the Blanket is being pulled from the centre, both sides of the Blanket will fold under to keep the leading edge out of the water, aiding its movement.
4. Once the Blanket has wound out onto the Pool detach it from the Roller by lifting out the "TEE" pieces.  
**Note:** Detachable Systems only.
5. By using your Pool broom, flatten out the blanket so each side and each end goes up the wall of the Pool.  
**Note:** Debris cuts only (Fig B).
6. If your pool has inside curves the Blanket will be cut to the water line at those parts to enable the Blanket to lay flatter (Fig A).

**Note:** All Blankets will have slight lumps along the welds caused by the fabric shrinking due to the welding.



## HOW TO CARE FOR YOUR BLANKET

### Winding your pool blanket off your pool

The following cautions must be adhered to otherwise the life of your Pool Blanket will be drastically reduced and the Manufacturer's warranty will be voided.

1. **STAY OFF BLANKET.**  
**THE POOL BLANKET IS NOT A SAFETY COVER.**  
Don't walk upon your Pool Blanket. Remove completely before entering your pool to avoid the risk of drowning. Don't swim underneath the Pool Blanket.
2. **DON'T ALLOW CHLORINE LEVELS TO EXCEED 2.5 PARTS PER MILLION.** If your pool is salt water chlorinated turn you chlorinator down and test your chemical levels regularly. Salt-water pools damage Blankets if chlorine levels are allowed to rise above light pink on your tester, eg keep chlorine levels between 2.0 to 2.5 parts per million or blow as per AS 3633-1989.
3. **DON'T EXPOSE THE POOL BLANKET TO DIRECT SUNLIGHT** when rolled up off the pool, even for the shortest periods. Extreme heat is subsequently generated and magnified through the layers of air cells, causing delamination and blistering. Therefore, when not in use place Blanket in a permanently shaded area or if stored on the Elite Roller (or similar roller), the white over cover supplied **MUST** be used to protect the Pool Blanket from the sun's rays.
4. **RUN POOL PUMP IN THE HOTTEST PART OF THE DAY,** eg 9am – 3pm to circulate water beneath the Blanket.
5. **POINT POOL RETURN JETS** away from the pool Blanket, downwards.
6. **WHEN STORING** the Pool Blanket off the pool for periods greater than one week, the Pool Blanket must be washed on both sides with fresh water as the Blanket is wound or folded to remove all traces of chemicals.
7. **FLATTEN POOL BLANKET OUT** with your pool broom to disperse air trapped beneath the Blanket.
8. **REMOVE POOL BLANKET** when adding chemicals or before "shock – chlorination" takes place.
9. **REMOVE POOL BLANKET** when water temperature is greater than 32°C.
10. **DON'T** drag Pool Blanket over rough coping or subject Blanket to extreme stress conditions which might result in tears, cuts or damage.
11. **DON'T** store Pool Blanket in heat above 40°C (even with over-cover in place)- place Pool Blanket in the shade.
12. **REMOVE** Pool Blanket in extreme winds.
13. **TO EXTEND THE LIFE** of your Pool Blanket, remove, wash, dry and store under cover in winter months.
14. **YOUR POOL BLANKET** is manufactured from a plastic material and in common with all plastics that are exposed to the elements, they are expected to deteriorate with age.

15. The Elite Pool Blanket will give you many more enjoyable hours in your pool than ever before. It is designed principally to act as a Solar Heater, at the same time serving the purpose of a pool cover. It will reduce your chemical maintenance costs as well as your water evaporation. **IT DOES MANY THINGS FOR YOU, THEREFORE IT MUST BE TREATED WITH CARE.** The Pool Blanket is made from polyethylene material containing thousands of unique air cells, which cannot be expected to withstand abuse or rough treatment.

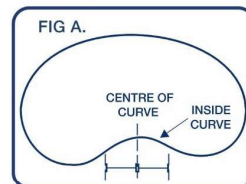
16. **USE:** For most effective results the Solar Pool Blanket must be replaced on the pool at night or in light wind conditions, otherwise substantial heat loss will result. Depending on your particular pool, you will soon develop the easiest method of removing the Pool Blanket.

**...DAMAGE caused by excessive heat or chemical exposure will void any warranty.**

## FREQUENTLY ASKED QUESTIONS

1. **Q: Why is my Pool Cover up one side more than the other?**

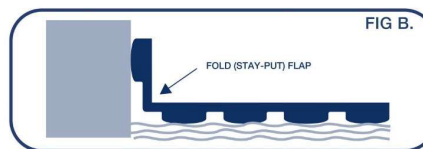
**A:** When your Pool Blanket is cut 50 – 75mm larger than your pool and your pool has inside curves (fig A). The Blanket has to be cut to the water line, at the inside curve to allow the blanket to lie flatter.



Often the pressure from one side to another makes the blanket move sideways, away from the inside curve, thus making gaps between the blanket and the wall on the inside curve which in turn makes the blanket seem larger on the other side.

### WHAT CAN I DO?

Simply move the blanket back against the inside curve and fold a 50mm or 2 inch flap in the fabric, like folding up a letter (Fig B) to give the fabric a flap to help it stay in place, or trim the Blanket to the water line.



2. **Q: Do Blankets shrink?**

**A:** Yes, over the life span of all solar Blankets shrinkage will occur, up to 2% on length and width.

3. **Q: Does a smaller Blanket work less efficiently?**

**A:** Blankets that are slightly smaller than the pool or water line cuts are easier to get on and off the pool. As Blankets are primarily for heating and stopping evaporation, there is little or no difference in performance.

4. **Q: Will more debris get in?**

**A:** Solar blanket will keep out about 70% to 80% of debris which is far better than without one. As they shrink slightly, more debris can get in. **TIP:** If you have a major debris problem, a Debris Cover that comes up over the edge could be the answer for the leaf falling month (contact your ELITE distributor for details).

5. **Q: How do I get the debris off the Solar Blanket?**

**A:** If you have a roller simply wind the Solar Blanket off, allow the debris to drop into the water and with your leaf scoop,

scoop across the end of your pool. **TIP:** Tiring your surface skimmer on will pick up some of the smaller dirt. For Blankets without a roller, the debris can be swept, blown or vacuumed off before removing Blanket.

6. **Q: How do I stop the Blanket from moving in the wind?**

**A:** Lower your water level or lay the garden hose around the edge of the Blanket, or trim the Blanket to the water line. **TIP:** Lay a weight such as a strip of wood on the edge facing the windy side.

You have paid the installer to trim your blanket to the shape of the pool and to the water line on inside curves. If you require us to re-trim the blanket in the future we will be happy to do that for you (charges apply). All call outs are charged at current installation rates. It is very easy to trim any access blanket yourself with a standard pair of scissors.

7. **Q: What can I do about the creases in the Blanket?**

**A:** Creases caused by packaging usually flattens out in a matter of days. When all solar blankets are welded, the welded seams shrink causing the Blanket to have creases, very time and constant rolling, these creased will decrease.

### WHAT CAN I DO?

On a warm day, with one person at one end and one on the other, stretch the seam. Do this a few times can the blanket will lay flatter.

**TIP:** Use your pool broom to flatten the blanket out each time you put it onto the pool and wind the Blanket onto the roller a few times.

**Note:** Pool Blankets will not lay dead flat on any pool.

8. **Q: My Blanket doesn't wind straight onto the roller?**

**A:** As most pools are not rectangular, curves in pools push the Blanket to one side or the other,

### WHAT CAN I DO?

When the blanket starts to wind crooked, hold the tube to stop motion, and pull the Blanket straight. On some pool shapes you will need to do this more than once.

9. **Q: My Blankets bubbles have gone flat.**

**A:** This is because your pools water is starving of oxygen and drawing oxygen out of the bubbles, causing them to become inverted. This will no effect the heating, life span or operation of your Blanket in any way.

**DON'T ALLOW YOUR CHLORINE TO RISE ABOVE 2.5PPM**

**Enjoy your warm solar efficient pool!**



# Maintaining Pool Water Quality



Liquid chlorine is used as a sanitisation agent, meaning that it kills pathogens. The recommended level is 1 to 3 parts per million (ppm).

When liquid chlorine is added to pool water, it breaks into two parts that do the killing. One is called 'strong chlorine', and the other no one cares about enough to give a name :-)

The proportion of strong chlorine produced depends on the pH of the water. The lower the pH, the more strong chlorine you get. This chlorine then it turns into gas at the surface of the water, and if there is no cover on the surface, it disappears into the air. That is why you have to add more chlorine every now and then to keep it within range.

If there is a cover on the surface, it builds up under it. If too much builds up, it starts to damage the cover.

**This is why you should remove your cover for four hours once a week – to protect your cover.**

So, if your pool's pH is too low, your chlorine disappears too quickly and therefore doesn't do its job. But if your pool's pH is too high, then when you add chlorine you don't get the amount of strong chlorine you need to kill the nasties.

**And that is one reason you want your pH to be between 7.2 and 7.6, and ideally 7.4. When you add chlorine to your pool, it gives you just the right amount of strong chlorine you need. That makes the water safe to swim in and saves you money on chemicals.**

Now, your pool water also wants a specific amount of calcium in it. If it doesn't have the right amount, it takes it from the surface of your pool and your pool equipment, damaging it in the process. If it has too much, then it falls out of the water. This makes your pool water cloudy and also forms scale on the surface of your pool and equipment.

**This is why you want your calcium hardness to be between 200 and 400 parts per million if you have a concrete pool, and 150 to 250 parts per million if you have a fibreglass pool. No damage to your pool and equipment, and no cloudy water.**

If you have low calcium hardness and low pH, the damage done to your pool and pool equipment is turbo charged.

If you have high calcium hardness and high pH, your pool water will be super cloudy, and you will have a tonne of scale.

**This is another reason you want your pH to be between 7.2 and 7.6.**

Once your pH is within range, you want it to stay that way, so you don't want your pH to change easily. Otherwise, you will spend too much time messing around adding chemicals to keep it in within range. That is where Total Alkalinity comes into play.

Alkalinity is a measure of the water's ability to resist changes in pH, so you want your water's Total Alkalinity to be just right.

If the Total Alkalinity is too low, pH can change very quickly.

If the Total Alkalinity is too high, then when you try to change the pH to get it within range, it just doesn't want to change.

The sweet spot for Total Alkalinity is between 80 ppm and 120 ppm.

There is only one more thing to know. If you do your own pool maintenance, the chlorine in your pool water is probably unbound. It is free to turn into gas and dissipate. However, you can bind a portion of it. This bound portion is not available to turn into gas. It acts like a 'slow release' version of your chlorine. This is called 'stabilised' chlorine.

Cyanuric acid is used to do this. It is commonly called stabiliser. If you started with unchlorinated water, added cyanuric acid to it, and then added chlorine to the water, the cyanuric acid will bind as much chlorine as it can. After that, the remaining chlorine is unbound. Floating around ready to kill those nasties.

As the level of unbound chlorine dissipates, the stabilised chlorine breaks down into chlorine to maintain the level of chlorine. Perfect for those sunny summer days.

**This is why you want to add stabiliser to your pool water. It reduces the spend on chlorine and extends the time required for maintenance.**

The right level for cyanuric acid is 30 ppm to 50 ppm.

So, to summarise

- Chlorine between 1 and 3 ppm
- pH between 7.2 and 7.6
- Calcium hardness between 200 and 400 ppm (concrete pool), 150 and 250 ppm (fibreglass pool)
- Total Alkalinity between 80 ppm and 120 ppm
- Cyanuric acid between 30 ppm and 50 ppm

If your pool maintenance is done by someone else, you now know enough to work out whether or not the person doing it knows what they are up to.



If maintain your pool yourself, you know enough to get yourself a 'stabilised' pool. One with nice clear water that is safe to swim in and easy to maintain because it wants to stay that way.

If that is you, you probably want to know the easiest way to do it. Take a sample of water down to your pool shop and have them test it using their whizzy Testomatic 3000. Remember to estimate the volume of water in your pool before you go down. If you tell them the volume of your pool, and you tell them you want to stabilise it, they can calculate exactly what you need to add to do this.

While you are there, grab the stuff you need to maintain your levels and grab a test kit. If you really love using your pool, get a good one like the Taylor Complete Pool & Spa Test Kit - High Range K-2005C – DPD. It is worth it. Remember to get sodium carbonate. I will tell you why later.

Chuck everything they gave you in a bucket, give it a stir, wait a while, and then walk around your pool pouring it in. Give it a week and test your water yourself using your whizzy new test kit. The supplies you bought will give you guidelines, but you can also use something like...

<https://johnbrennanpools.com.au/pool-chemicals-calculator/>

to do the job.

Make the adjustments. Test once a month every month to keep your pool stabilised.

#### **While I have got your attention, here are some tidbits...**

Give the walls and steps of your pool a quick brush every month when you are testing the water, and don't forget to empty your skimmers, backwash your filter, and clean your pump baskets. Keep it looking schmick.

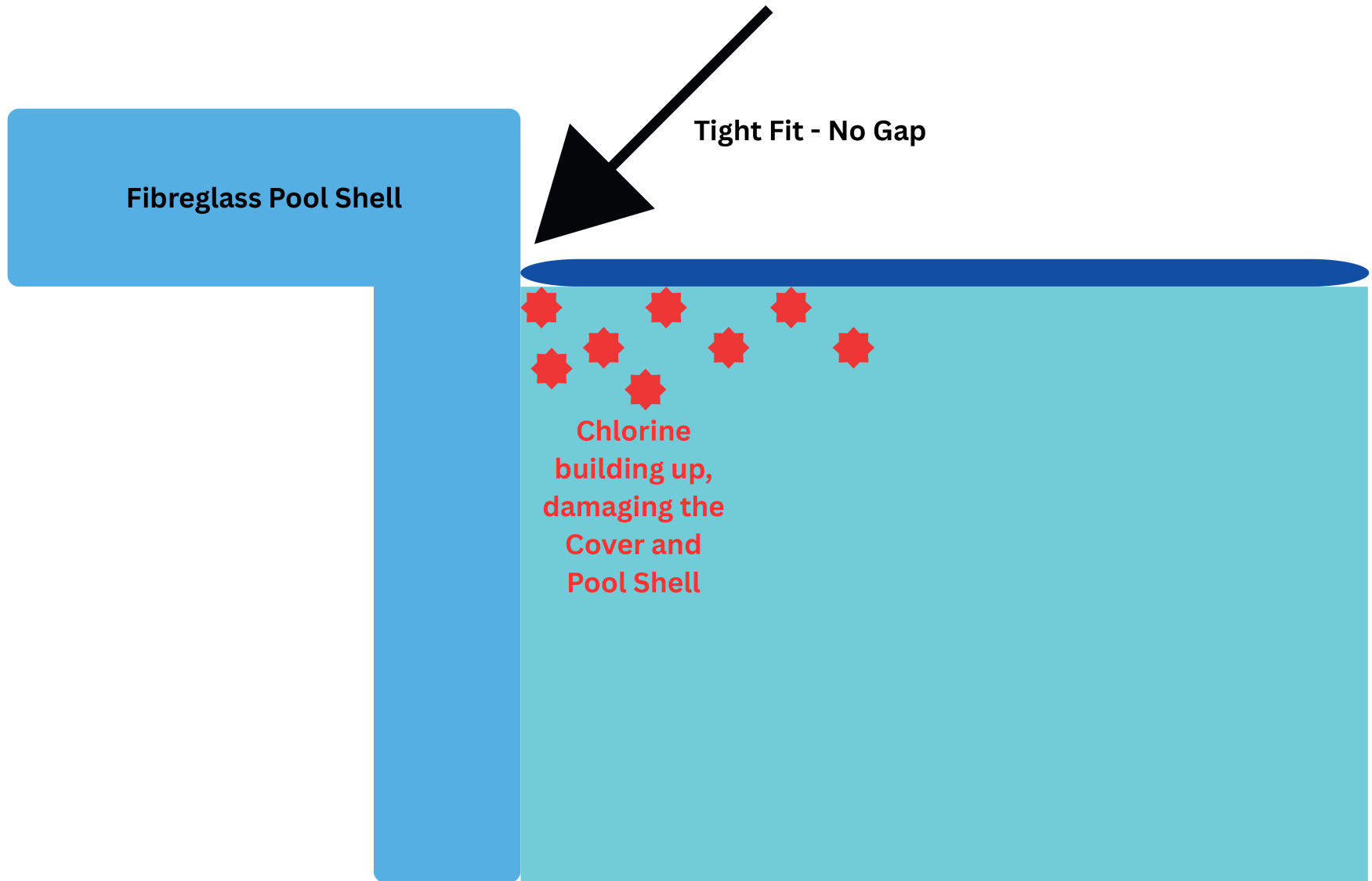
Take your pool cover off during winter. You don't need it to warm the pool. Your pool cover will last twice as long, and it will prevent algae from growing.

Winter rain has a big impact on the water chemistry of your pool. If there is a period of heavy rain, immediately test your pool water and correct any imbalances resulting from dilution.

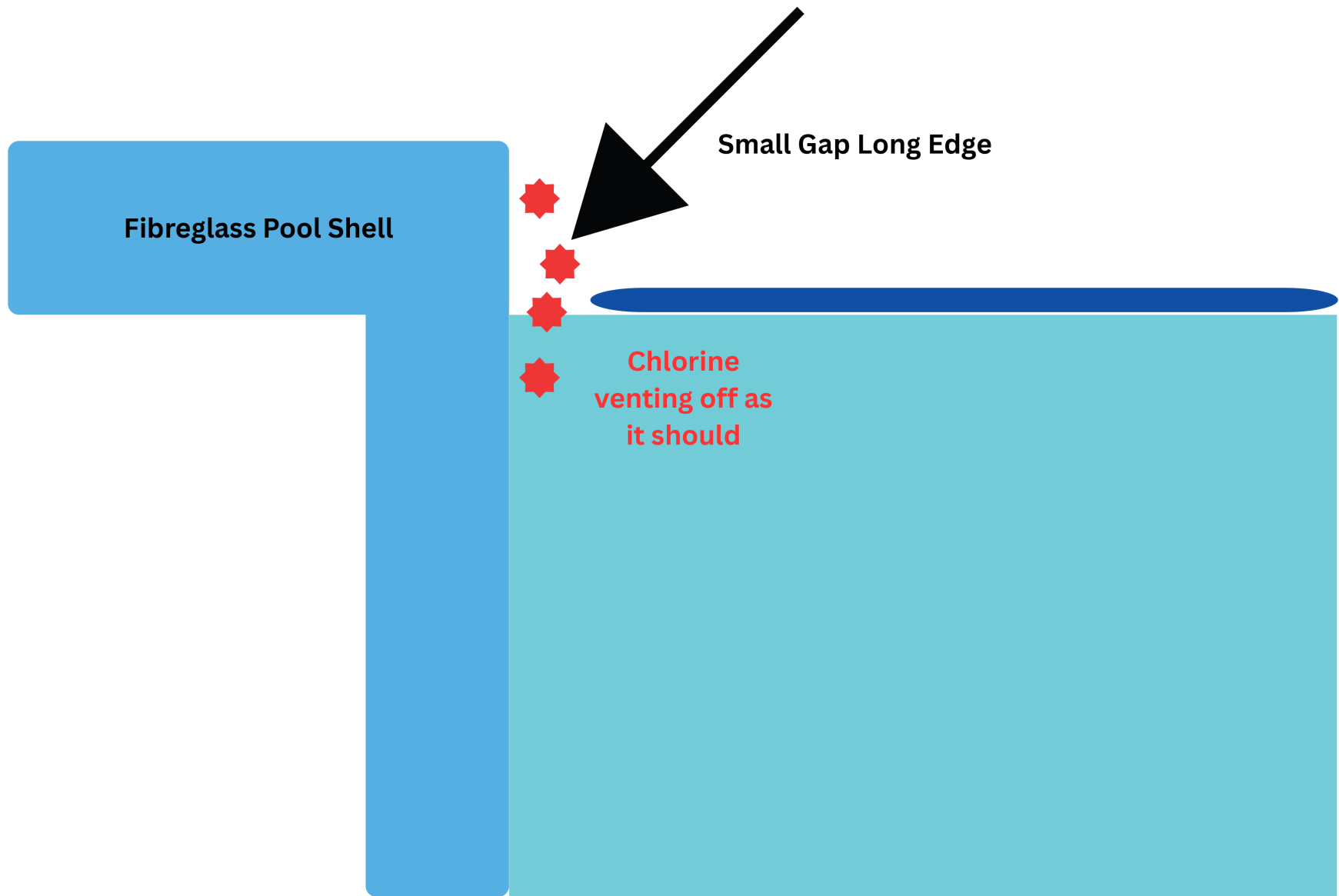
Run your pump during the hottest hours of the day.

Point your jets down to keep the freshly chlorinated water away from your pool cover – you don't want to damage it.

If you have to shock your pool with a chlorine bombing, leave the cover off for 24 hours. It gives your pool a chance to breathe, balance, and bounce back safely.









 10 Cressall Rd, Balcatta WA 6021

 (08) 9240 2262

 sales@poolcovers.com.au

 poolcovers.com.au

